

Result scoring

Result	Points
Correct result*	0
Incorrect result*	100
Uninterpretable**	50

* Where at least 80% of participants agreed

** Where the result could have been determined

Performance monitoring

We contact centres with incorrect results to try to help them establish the cause, and to talk through possible actions that might reduce the risk of a similar problem occurring with a clinical sample.

Confidentiality is maintained at all times.

How we can help

UK NEQAS BTLP are here to help however we can. We are always happy to discuss any questions you may have. Please contact us if you have any questions about

- Is this the right scheme for you?
- How much does it cost?
- How does it work?
- How to register?
- Are there other schemes for you?

UK NEQAS
Haematology and Transfusion

Contact us

Scheme enquiries

btlp@ukneqas.org.uk

+44 (0) 1923 217 933

www.ukneqasbtlp.org

Registration enquiries

ghadmin@ukneqas.org.uk

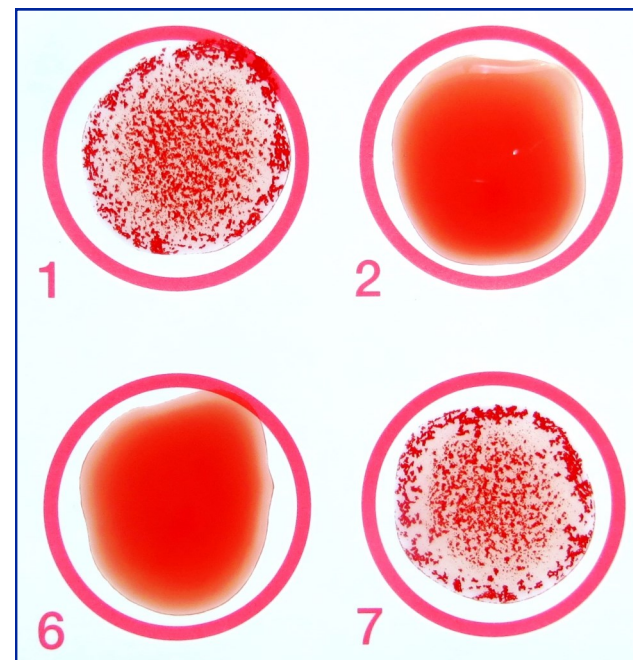
+44 (0) 1923 217 933



UK NEQAS
Haematology and Transfusion

Point of Care Testing

POCT - D typing



UK NEQAS – Watford

UK NEQAS Blood Transfusion Laboratory Practice (BTLP) has been operating since 1985.

We are based in Watford, and every year we send samples to over 1000 participants in over 50 countries, across all of our transfusion schemes.

We have been fully CPA/UKAS accredited since 1999.

The BTLP team in 2017



Benefits of EQA

External Quality Assessment (EQA) forms an essential part of quality assurance and provides evidence of the centre's performance.

EQA helps with

- Demonstrating strengths and weaknesses in systems
- Monitoring performance
- Delivering education
- Providing evidence for guidelines and manufacturers
- Improving standards overall
- Supporting accreditation

Samples

Each exercise contains 3 samples produced to replicate samples of whole blood from patients.

Our samples are prepared in house from freshly donated units of red cells and fresh frozen plasma from NHSBT.

All material used has been tested and found negative for HIV, HBV, HCV, HTLV, and Syphilis.

Schedule

Four sets of samples are spread throughout the year. Holiday periods are avoided to allow for periods which typically result in low staffing levels.

There are 14 days for centres to test the samples and submit results to us.

Distribution

Samples are dispatched by Royal Mail first class. Repeat samples can be requested free of charge.



Data entry

A new data entry website designed specifically for this point of care scheme was introduced in May 2018. This allows quick and easy login and result entry.

Reports

New reports have been designed specifically for this scheme and were first released in June 2018. These reports cover participant results and performance, as well as overall results and comments on any interesting findings.